

sign connectors

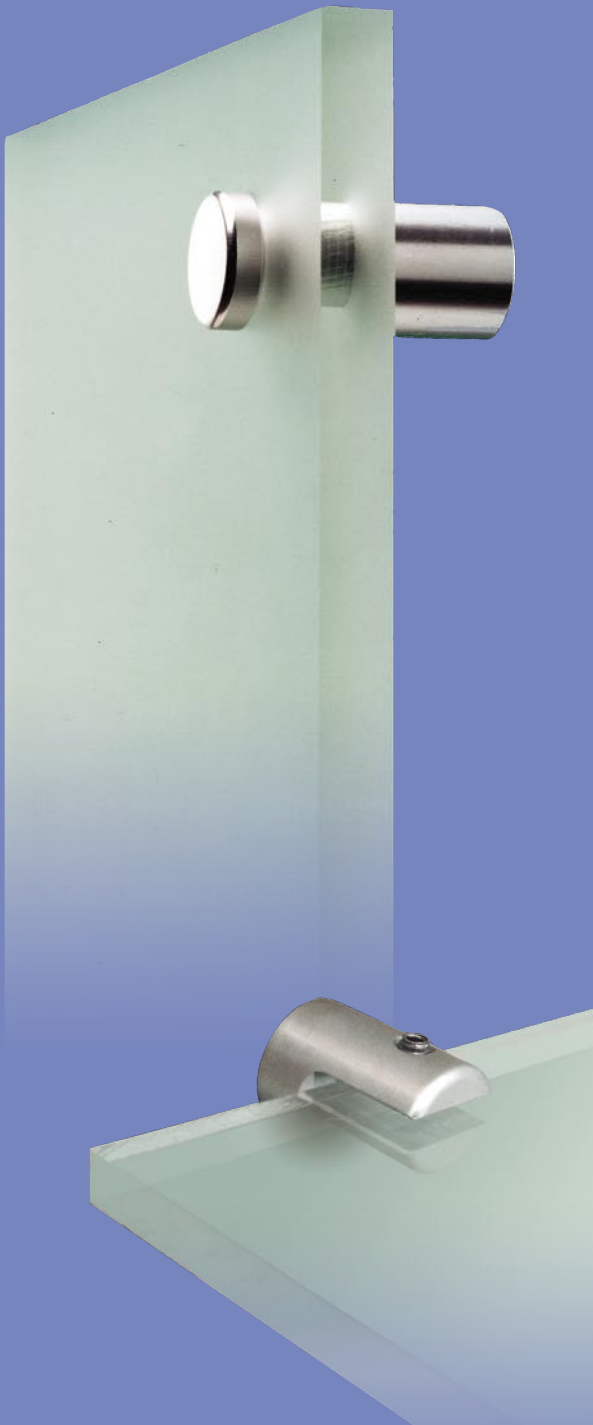
basic elements



sign connectors

basic elements

Create stylish design detail quickly and easily with our versatile range of budget-priced mounting components.



WALL MOUNTED SIDE GRIP

Suitable for up to 3mm panel thickness.

Code: 6520/HC
Size: 19mm Ø



WALL MOUNTED SIDE GRIP

Suitable for up to 6mm panel thickness.

Code: 6522/HC
Size: 19mm Ø



WALL MOUNTED SIDE GRIP

Suitable for up to 12mm panel thickness.

Code: 6530/HC
Size: 19mm Ø



THROUGH HOLE PANEL SUPPORT

20mm standoff.
Panel hole diameter 9mm.

Code: 6523/HC
Size: 12mm Ø



THROUGH HOLE PANEL SUPPORT

Suitable for 2-12mm panel thickness.
25mm standoff.

Code: 6624/HC
Size: 19mm Ø
Panel hole: 12mm Ø



THROUGH HOLE PANEL SUPPORT

Suitable for up to 18mm panel thickness.
25mm standoff.

Code: 6630/HC
Size: 19mm Ø
Panel hole: 12mm Ø



THROUGH HOLE PANEL SUPPORT

Suitable for 2-12mm panel thickness.
50mm standoff.

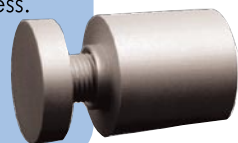
Code: 6627/HC
Size: 19mm Ø
Panel hole: 12mm Ø



THROUGH HOLE PANEL SUPPORT

Suitable for 2-12mm panel thickness.
25mm standoff.

Code: 6625/HC
Size: 25mm Ø
Panel hole: 12mm Ø



THROUGH HOLE PANEL SUPPORT

Suitable for 2-12mm panel thickness.
50mm standoff.

Code: 6626/HC

Size: 25mm Ø

Panel hole: 12mm Ø



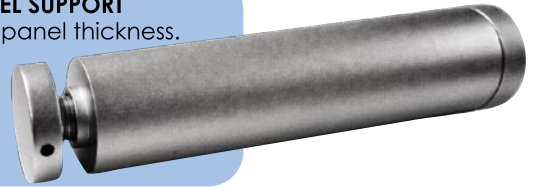
THROUGH HOLE PANEL SUPPORT

Suitable for 2-12mm panel thickness.
100mm standoff.

Code: 6532/HC

Size: 25mm Ø

Panel hole: 15mm Ø



WALL / CEILING PANEL GRIP

Suitable for up to 5mm panel thickness.

Code: 6535/HC

Size: 12.5mm Ø



WALL / CEILING PANEL GRIP

Suitable for up to 8mm panel thickness.

Code: 6521/HC

Size: 18.5mm Ø



WALL / CEILING PANEL GRIP

Suitable for up to 12mm panel thickness.

Code: 6526/HC

Size: 25mm Ø



ALUMINIUM SPACER

Code: 6131/HC

Size: 16.5mm/6mm Ø, 30mm L



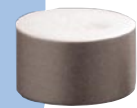
FLUSH MOUNT BUTTON FIXING

Suitable for up to 10mm panel thickness.
5mm standoff.

Code: 6533/HC

Size: 12mm Ø

Panel hole: 5mm Ø



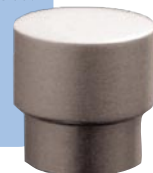
FLUSH MOUNT BUTTON FIXING

Suitable for up to 10mm panel thickness.
5mm shadow line.

Code: 6533-5/HC

Size: 12mm Ø

Panel hole: 5mm Ø



FLUSH MOUNT BUTTON FIXING

Suitable for up to 10mm panel thickness.
5mm shadow line.

Code: 6534-5/HC

Size: 12mm Ø

Panel hole: 5mm Ø



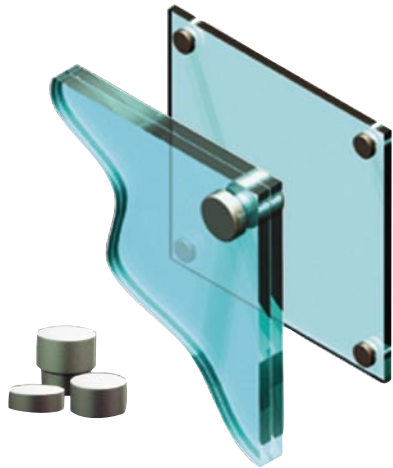
FLUSH MOUNT BUTTON FIXING

Suitable for up to 10mm panel thickness.

Code: 6534/HC

Size: 19mm Ø

Panel hole: 5mm Ø



CHECK OUT
our budget cable
& rod range

ASK FOR OUR
LATEST CABLE & ROD
SYSTEM BROCHURE!



sign connectors

basic elements

1 WAY PANEL SUPPORT

Suitable for up to 12mm panel thickness.
25mm standoff.

Code: 6643/HC
Size: 19mm Ø



2 WAY PANEL SUPPORT

Suitable for up to 12mm panel thickness.
25mm standoff.

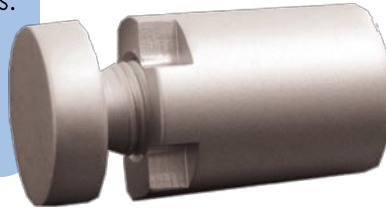
Code: 6644/HC
Size: 19mm Ø



4 WAY PANEL SUPPORT

Suitable for up to 12mm panel thickness.
25mm standoff.

Code: 6645/HC
Size: 19mm Ø



DOUBLE PANEL SUPPORT

25mm standoff with 10mm spacer for
2 no. panels 3-8mm thick. Total panel
thickness 16mm. Panel diameter 12mm.

Code: 6633/HC
Size: 19mm Ø



DOUBLE PANEL SUPPORT

25mm standoff with 20mm spacer for
2 no. panels 3-8mm thick. Total panel
thickness 16mm. Panel diameter 12mm.

Code: 6634/HC
Size: 19mm Ø



multiple panel
supports



19mm Ø 4-way

double panel
supports



19mm Ø double support